

CTA2 Digital Torque and Angle Wrench

Direction



Assembly Digital Interchangeable Signal Re-Chargeable RoHS

- Snug and angle setting functions
- Buzzer/Light alerts to snug torque and angle completion
- Angle mode activates automatically, once snug torque is achieved.

Accuracy ±1%

S.I. Model	Torque Range [N-m]		Metric Model	Torque Range [kgf-cm/kgf-m]		American Model	Torque Range [lbf-in/lbf-ft]		Angle Measuring Range		Angle Accuracy	Overall Length [mm]	Weight [kg]
	Min.-Max.	Grad.		Min.-Max.	Grad.		Min.-Max.	Grad.	Min.-Max.	Grad.			
CTA50N2x12D	(2.5) 10-50	0.05	CTA50N2x12D-M	(25) 100-500	0.5	CTA50N2x12D-I	(25) 100-450	0.5			±2 ⁺ +1 digit (Angular velocity is 30°/s - 180°/s when the bolt turned to 90°)	282	0.58
CTA100N2x15D	(5) 20-100	0.1	CTA100N2x15D-M	(50) 200-1000	1	CTA100N2x15D-I	(50) 200-900	1				384	0.63
	-	-	-	-	-	CTA100N2x15D-F	(3.8) 15-75	0.1	0-999°	1°		384	0.63
CTA200N2x19D	(10) 40-200	0.2	CTA200N2x19D-M	(100) 400-2000	2	CTA200N2x19D-F	(7.6) 30-150	0.2			475	0.78	
CTA360N2x22D	(18) 72-360	0.4	CTA360N2x22D-M	(180) 720-3600	4	CTA360N2x22D-F	(13) 52-260	0.4			713	1.13	
CTA500N2x22D	(25) 100-500	0.5	CTA500N2x22D-M	(2.5) 10-50	0.05	CTA500N2x22D-F	(18) 72-360	0.5			949	4.00	
CTA850N2x32D	(43) 170-850	1	CTA850N2x32D-M	(4.3) 17-85	0.1	CTA850N2x32D-F	(31) 124-620	1			1387	5.14	

- Note**
1. The value shown in () shows the lowest snug torque. Accuracy cannot be guaranteed for snug torque set beyond the operative torque range.
 2. Overall length does not include interchangeable head.
 3. PH (Pipe wrench head) type interchangeable head cannot be used with this model.
 4. CTA500N2x22D and CTA850N2x32D have knurled handles.

Standard Accessories Battery pack (BP-5), QH interchangeable head, Quick battery charger (BP-3-100/BP-3-200), Application PC software

Torque Wrench for Assembly

CTA2 Optional Accessories

Battery Pack (P.47)

Model
BP-5

Quick Battery Charger (P.47)

Model	Voltage
BC-3-G	100-240V

Printer (P.67)

Model
EPP16M2

Connecting Cable (P.47)

Part #	Applicable Model
379	CTA2 → EPP16M2
575	CTA2 → PC (D-SUB 9PIN FEMALE)
584	CTA2 → PC (USB A)

- Note**
1. () shows pin shape of the connecting cable.
 2. Consult Tohnichi for other types of connecting cables.

CTA2, Single Spindle Mode and Production Mode

CTA2 Features 2 Modes: Single Spindle and Production Modes

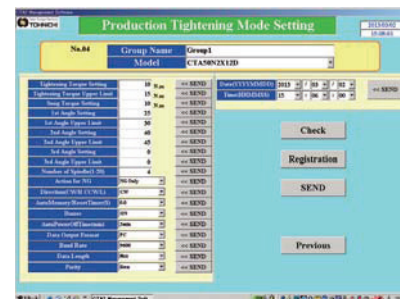
Single Spindle Tightening Mode: For angle method tightening of a single bolt tightening with snug torque, tightening angle and tightening angle upper limit settings.

Production Tightening Mode: For angle method tightening of multi spindle, with tightening torque, snug torque, 1st, 2nd and 3rd tightening angle, each upper limited angle, the numbers of spindles are registered.

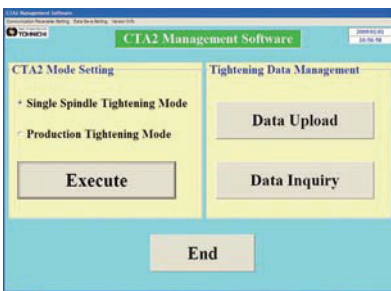
By using the included software package, various settings can be done through the PC and transferred to the wrench with the final tightening values being sent back to an Excel spreadsheet.



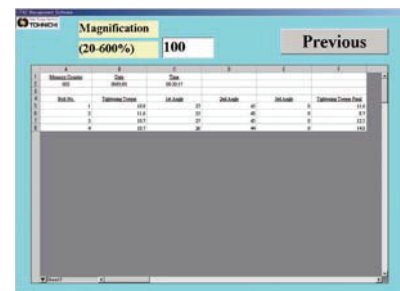
Single Mode Setting Display



Production Mode Setting



Main Menu



Production Mode Data Display

CTA2 Common Specifications

Data Memory	999 data (Tightening torque, 1st angle value, 2nd angle value, 3rd angle value and final torque value)
Measurement Mode	Single spindle/Production mode
Data Output	RS232C compliant
Zero Adjustment	Auto zero (Angle, Torque)
Power	Ni-MH rechargeable battery
Continuous Use	Approx. 20 hours with fully charged (8 hours by 1 hour recharging)
Recharging Time	Approx. 3.5 hours
Temperature in Use	0-40 Celsius no condensation

Other Functions Snug torque, Tightening torque, Max. tightening torque, 1st, 2nd, 3rd angle, 1st, 2nd, 3rd max. angle, Number of bolts, Auto reset, Judgment, Setting through PC, Battery indicator